



Technical Announcement

IABU, DELTA ELECTRONICS, INC

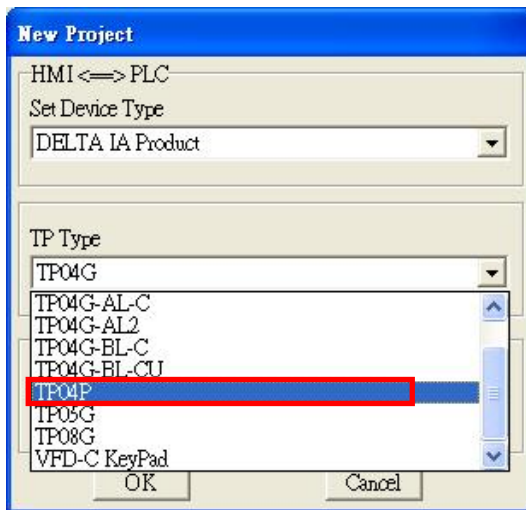
Product	TPEditor	Applicable Model	TP series: TP04G TP02G TP04G-AL-C TP04G-AL2 TP04G-BL-C TP04G-BL-CU TP04P TP05G TP08G VFD-C KeyPad	Confidentiality Level	<input checked="" type="checkbox"/> General <input type="checkbox"/> Classified <input type="checkbox"/> Top secret
				ECN No.	N/A
Published by	PLC Division	Publisher	Kin Lin	Publication No.	PLC-01-EN-121228-01
				Date of Publication	Dec. 28, 2012
Published to	Taiwan Sales, Product Manager, DGC, DEU, DPR, DES, DEJ				

Object: Releasing TPEditor version 1.60

Purpose: Adding/Modifying interfaces supporting TP04P

The functions which are added and the functions which are modified are described below.

1. The model **TP04P** is added to the **TP Type** drop-down list box.

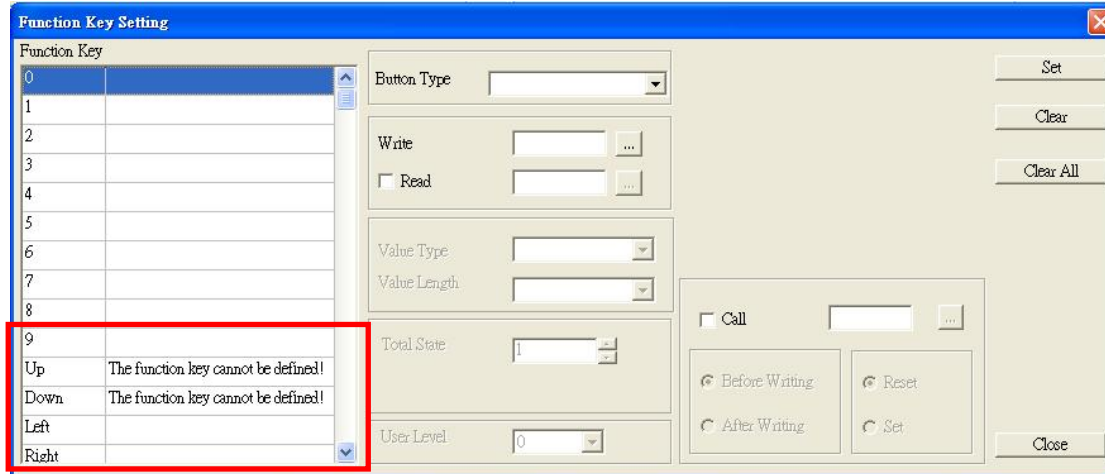


2. **PLCLink Setting** is added to the **Button Type** drop-down list box for TP04P.

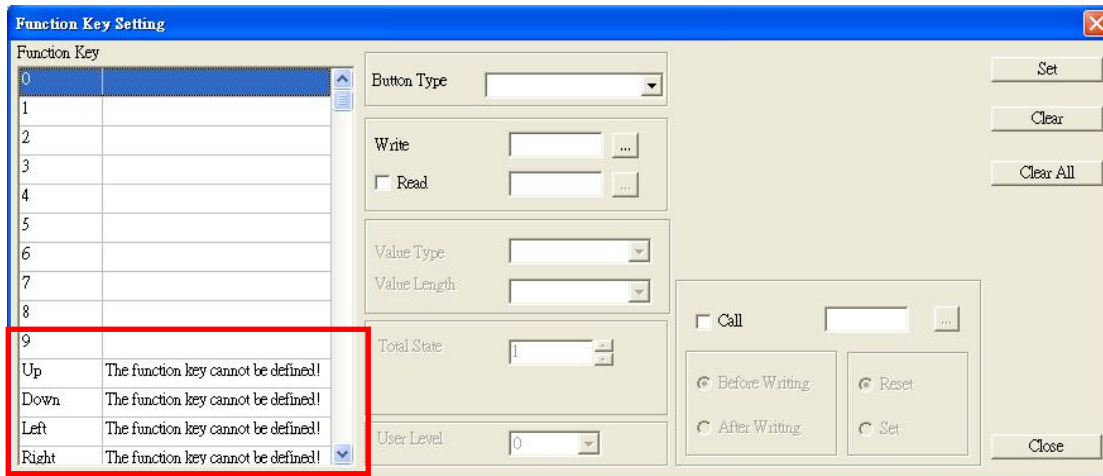


3. The **Left** key and the **Right** key can not be defined.

Before:

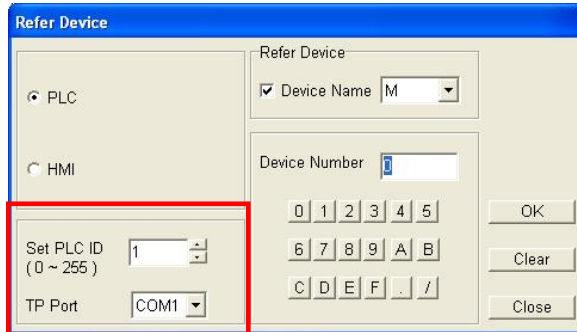


After:



4. The **Refer Device** window is modified. The **Refer Device** window for TP04P is different from the **Refer Device** window for non-TP04P.

Before:



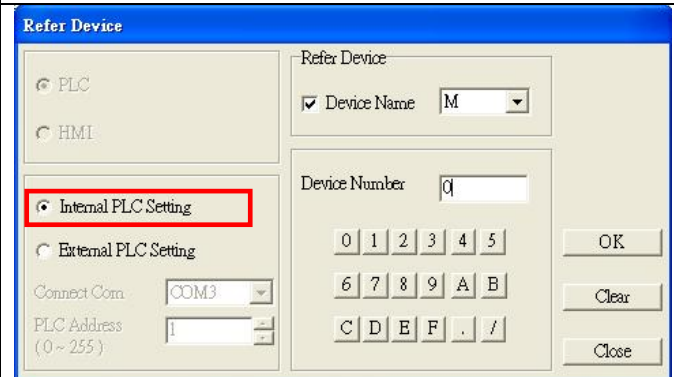
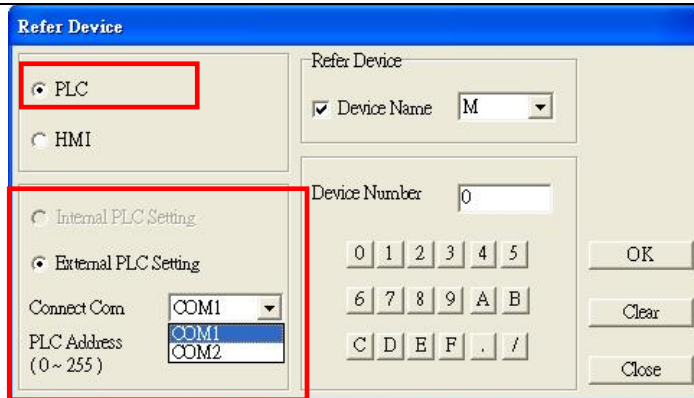
After:

Non-TP04P: Users can set a PLC or an HMI.

TP04P: Users can set the PLC inside TP04P, or the PLC connected to TP04P.

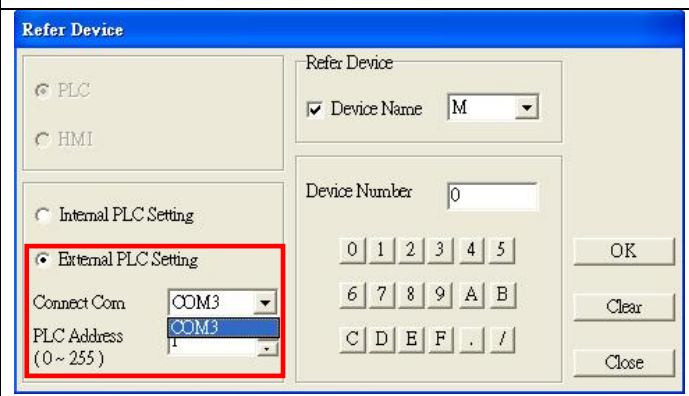
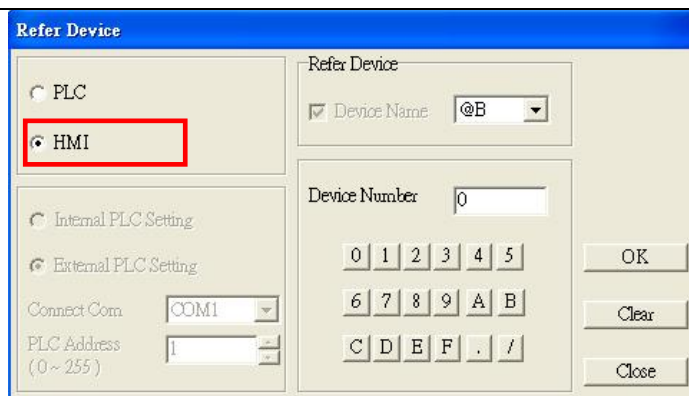
Setting a PLC:

Setting the internal PLC: The communication port and the communication address can not be changed.



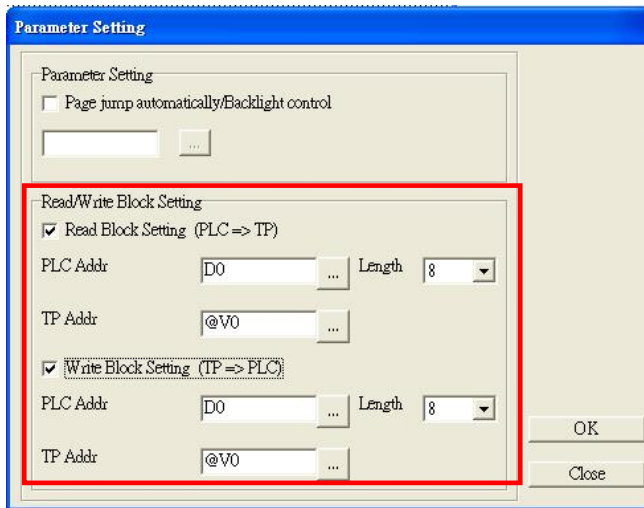
Setting an HMI:

Setting the external PLC: Users can select a communication port and a communication address.



5. The **Parameter Setting** window is modified.

Before:

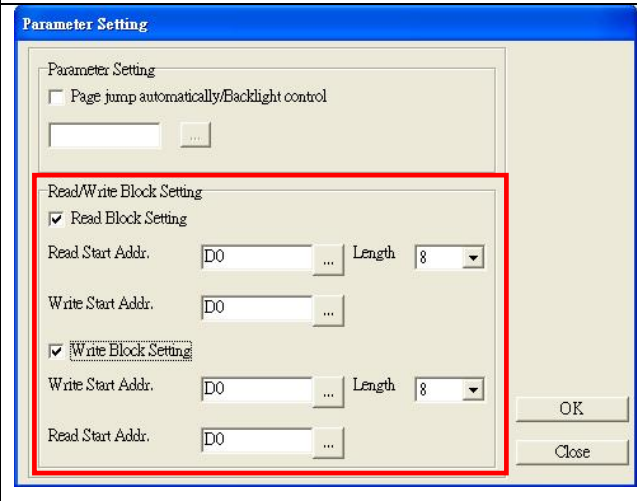
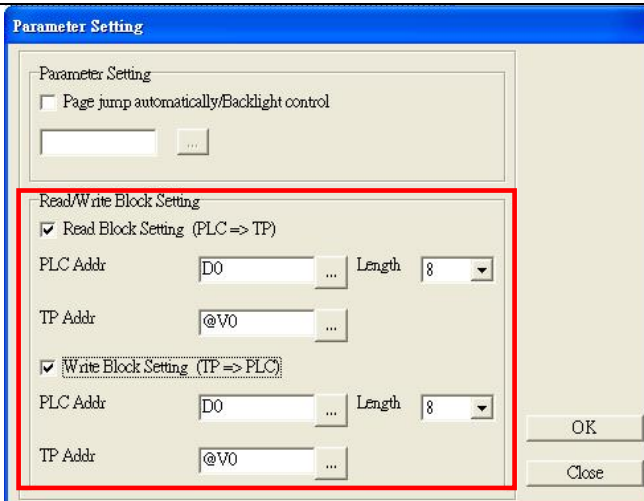


After:

The **Parameter Setting** window for non-TP04P

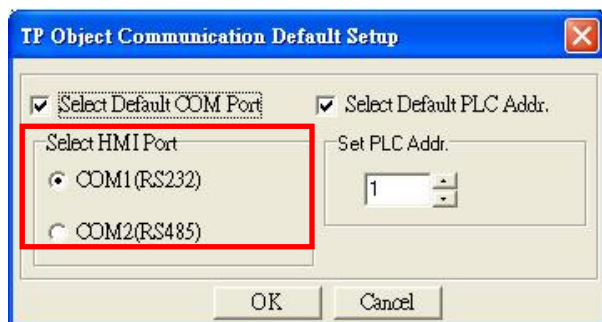
The **Parameter Setting** window for TP04P

- **Read Block Setting:** The **Read Start Address** can be a device address in the internal/external PLC. The **Write Start Address** can only be a device address in the internal PLC.
- **Write Block Setting:** The **Write Start Address** can be a device address in the internal/external PLC. The **Read Start Address** can only be a device address in the internal external PLC.



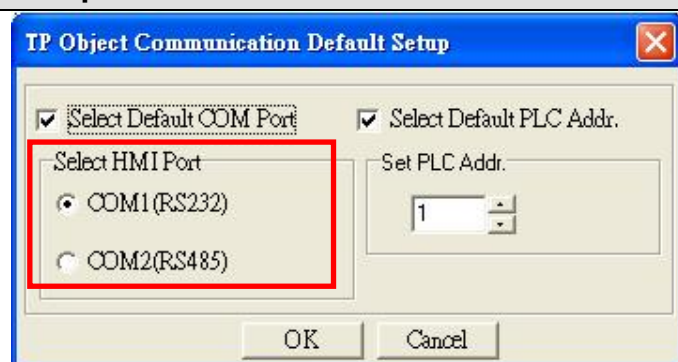
6. The **TP Object Communication Default Setup** window is modified. The **TP Object Communication Default Setup** window for TP04P is different from the **TP Object Communication Default Setup** window for non-TP04P.

Before:

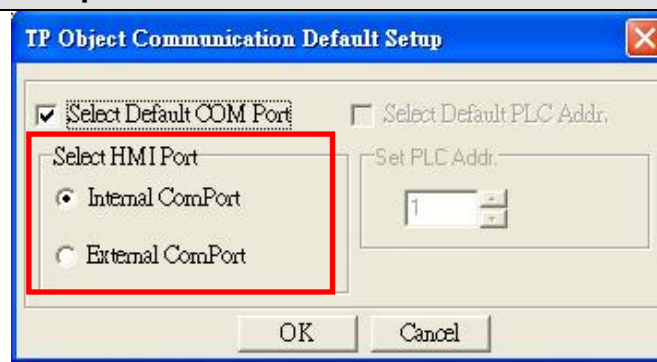


After:

The **TP Object Communication Default Setup** window for non-TP04P



The **TP Object Communication Default Setup** window for TP04P



Download the software:

http://www.delta.com.tw/product/em/download/download_main.asp?act=3&pid=3&cid=3&tpid=3